

InSync[™] I

SAFLOK[™] has designed and manufactured powerful solutions that help building managers achieve increased access management flexibility, security, and efficiency in their daily operations. SAFLOK products are the trusted name in multifamily communities, student housing and campuses, commercial buildings, as well as transient and long-term military housing.

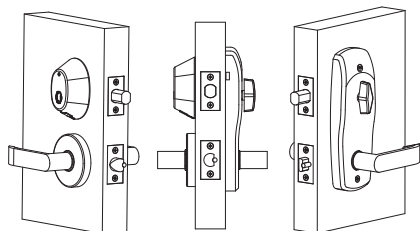
The InSync[™] series is the latest lock line. The series features a complete range of versatile locks that communicate by means of a wireless RFID (radio frequency identification) platform. The operating system for the locks is the Windows-based SAM[™] RF software. This software programs information, such as access codes, onto the RFID key.

The InSync I lock includes a robust sectional trim. The inside trim interconnects the dead-locking latch bolt below to the 1" saw-proof dead bolt. When the lever is depressed, both bolts are simultaneously retracted.



Security Access Manager

InSync I can be provided in two different configurations in order to accommodate various applications.



InSync I Unit Locks

The unit configuration provides operational functionality for individual entry doors. Rotation of the inside thumb-turn extends or retracts the 1" dead bolt locking or unlocking the door. In the locked position, only duplicate resident and authorized service keys can access the lock. Unit locks are programmed with one resident code (change key). Each key made with one resident code can have up to 64 unique identity codes.

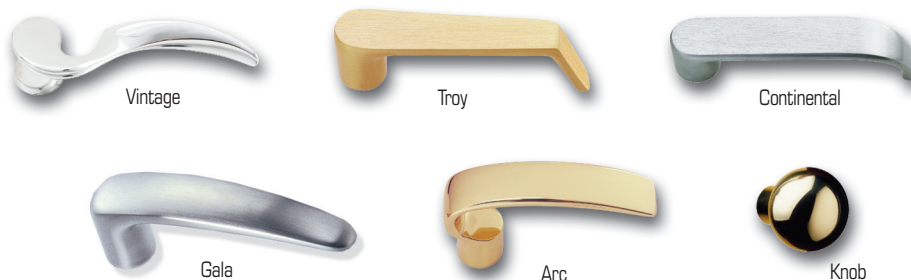
InSync I Suite Locks

The suite configuration was designed to allow access to multiple residents who have the need to access individual unit doors behind the suite door. InSync I suite locks require the resident to throw the dead bolt using the thumb-turn or rotating the key in the lock after ingress or egress to relock the door. Suite locks can recognize up to 20 resident codes.

InSync I Specifications

- 1" dead bolt
- 2 3/8" (60 mm) or 2 3/4" (70 mm) backset
- Complete interconnected lever set
- Interior thumb-turn
- Single motion egress
- Uses 4 AA batteries
- Certified by Underwriters Laboratories (UL) for use on fire doors up to a 20-minute rating

Handle Styles *(Vintage, Gala, and Arc levers may not be code compliant in all areas. Check local fire code. Actual finish color may differ from printed example.)*



Finishes *(* Check for availability.)*

Satin Chrome, Satin Brass, Bright Chrome, Bright Brass, *Dark Mahogany, & *Satin Nickel.



For worldwide office locations and contact information, visit us at www.saflok.com.

USA-Canada
Phone: **877.272.3565**

Europe · Middle East · Africa
Phone: **33.1.30.13.04.04**

Asia
Phone: **86.10.5861.3561**

Manufactured under one or more of the following patents:
U.S.: 4,177,657; 4,411,144; 4,534,194; 4,890,870; 5,198,643; 5,477,041; 5,820,177; 5,986,564; 7,051,561; D494,841; D501,131; D512,899; D519,021; D531,629; D533,009; D533,047; D533,762; D533,763; D535,629 CANADA: 1,252,854; 1,298,902
U.K. 2,010,375
Other U.S. and foreign patents pending

SAFLOK reserves the right to modify the characteristics and features of all products in this publication.
©2009 SAFLOK, all rights reserved.